

k.

[KLEIS DESIGN]

marketing brochures & collateral

KRIS KLEIS

[713.869.6900 tel • kris@kriskleis.com]



FMC Technologies: 2009 Subsea Tieback Invitation



FMC Technologies: 2010 Subsea Tieback Invitation

PLEASE JOIN US FOR THE

Subsea Tieback

FMC TECHNOLOGIES RECEPTION

WEDNESDAY, MARCH 7 • 7:00 P.M. — MIDNIGHT

MOODY GARDENS SHUTTLE 6:45 PM — MIDNIGHT

FMCTechnologies

WWW.FMCTECHNOLOGIES.COM

FMCTechnologies

OUR BEST EVENT IS TAKING OFF

Once Again!



FMCTechnologies

AT THE

LONE STAR FLIGHT MUSEUM

FOR MORE INFORMATION PLEASE CONTACT TABITHA LASCO
AT TABITHA.LASCO@FMC1.COM OR 832.445.1548



FMC Technologies: 2012 Subsea Tieback Invitation

FMC Technologies www.fmcstechnologies.com

The Engineering Rotational and Development Program

We put you first.
And keep you ahead.

A Depth Of Knowledge. A Place To Grow.

FMC Technologies is the world's largest supplier of systems and equipment for sulfate oil and gas production. We are seeking the sharpest minds to take our game-changing technology even further. We challenge what's possible. Every day.
Apply online at www.fmcstechnologies.com/careers

FMC Technologies
1227 Gears Road
Houston, TX 77062
Phone: 281.324.4300

FMC Technologies: Flyer



The Ranger Group: Pocket Folder & Insert



**HOUSTON
TOOL &
HOIST
CO., INC.**

houstontool.com

» products and services

houstontool.com

Blowing Supplies
Blowdown
Design Hardware
Drill
Storage Cabinets
Taps
Internal, nesting,
etc. (recip., etc.)
Tool Repair
Tool Drawings
Utility Hooks & Buckle
Brake
Welder Cables
Wire Rope
Wire Ropes
Wire Lights

Lead Chemical
Venting
V-Cut
V-Git
V-Git Assembly
V-Git Cutting Tools
V-Git Saws
V-Git

specialty products,
equipment & tools
for industry

» products and services

abrasives

enamel, bonded, diamond, dlc, buffing, polishing
3M Abrasives
3M Roll Paper
3M Roll Scotch-Brite
Abrasive Technologies
CGI Abrasives
Chicago Header
Clea Sub Products
Falcon
Falcon
HCS Abrasives
Machine Compounds
Marl
Modern Abrasives
Norton
Oxley
Paw-Cut
S&W Abrasives
Standard Abrasives
Weller
Weller
WORLD
Zarox

air tools

assembly tools, drills, grinders, impacts
APC
ATP
Auro/Dyno
Avis
Chicago Pneumatic
Diamond Tool
Dynabrade
Erie/Robson
Ingersoll-Rand
Lubler
Morgen Pneumatic
NDC
O.E.M. Parts
TC Service
Tosco Pneumatic
Top-Cut
Trelburg
Trumpf

cutting tools

**drills, grinders, tape PDS & Carbide,
precision tools, blades, gauges**
Advanced Cutting Tool
Bilder Tools
Brown & Sharp
Diamond Blades
E. P. Miller
Fulham Tool
Gage Assembly
Gage Tool
HCO Cutters
M. A. Ford
M. A. Morse
Mitsubishi
Mogren Cutting Tools
Pager Cutting Tool
Rapid & Sinter Tools
Ripps Tool Co.
SCM America
SOS-Holbrook
Strom
Sturtegg Saw Blades
Winters Tool Co.
Wright Gage

machinery tools & accessories
grinders, sanders, saws, hand and electric tools,
large tools, etc., etc.

3M Machinery
3M Tapes
Aces
Adhesive End
Baker Buffer/Grinder
Ble-Cuts
CD Taper Tools
Cot Tool
Complex Hand Tools
Gale
Gale-Blat
Gomex Spinels
Hilti Electric
Precision
S&P Machine
Slovak USA
H&L Cut
H&L-Kona Abrasives
Jocite Chutes
Jari
Kalamoon Sanders
Magne
Meyers (Blades)
Mitsubishi
Mitsubishi-File
Paco
Sankoh File
Shaper (Blade Sanders)
Surfex
Trumpf
Walter
Waterside File
Wobben
W.F. Mills
Wesco Tool

services

Consulting
Hose Repair
Hose Systems
Line (Set Line)
O.E.M. Parts
Tool Repair
Tool Certification
Tool Certification
Tool Certification
Tool Certification

houston
800-444-2190
san antonio
877-607-8081

specialty products,
equipment & tools
for industry

Houston Tool & Hoist: Product Brochure



Texas Southern University: Marketing Brochures



Furnishings For Service Establishments

We put a lot in to them because you demand a lot out of them.



800-632-4718 | solomatic.com | Flowline & Metal Furnishings By DIXIE MET

Steel Mesh Seating Units Take A Seat, Any Way You Want It

Our Sol-O-matic® family of seating solutions are made of high-quality steel mesh, finished with powder coating and finished in polished chrome. Seat and back colors can be mixed or matched for a custom-decorated look and increase visual impact that can improve any environment. These seating units are ergonomic, comfortable and extremely durable. Designed for quick installation and easy maintenance, they're available in Red, Blue, Silver and Black.

The steel mesh seat backs are made of perforated ergonomically shaped metal in one single piece, delivering comfort, unmatched durability, easy cleaning and life-to-life maintenance. The beam and seat are powder finished, and the arms and legs are chrome-plated.

Seating Units With Backrests

Model	Size
SM200-1	48" W x 28.5" D x 31" H
SM200-2	72" W x 28.5" D x 31" H

Seating Units With Footrests

Model	Size
SM200-3	48" W x 30.5" D x 31" H
SM200-4	72" W x 30.5" D x 31" H

All sizes include seat backs and footrests.



Model SM200-1

Model SM200-3



Model SM200-2



Model SM200-4



Model SM200-1



When we listen, we learn.

Building the custom home you desire starts with conversation. They start to envision, and every vision is unique. At Cason Graye, our goal is to listen and understand what you like, what excites you, what inspires you, and what makes you and your family feel safe and comforted. Only then can we interpret those wishes to create a home that meets your expectations, and all of which you will be proud.

Working with Cason Graye, a true custom home does not have to be out of your reach. The use of a trusted, diverse team of licensed architects and contractors, we consistently deliver high-quality, a great value and beautiful home neighborhoods.

We're in good company.

Although Cason Graye Homes was founded in 2004, our work is backed by nearly a decade of experience as an affiliate of the building industry, in addition to our own reputation and industry relationships. Our ability, integrity and expertise in the membership industry enables us to build and construct homes, and to have the same level of service that comes with the industry's reputation and expertise. In fact, at Cason Graye, we have earned the title of Certified GreenSource Builder as recognized by the National Association of Home Builders. We are also proud to be a member of the NAHB, and of the NAHB's ongoing commitment to sustainable building practices. And, we have an only custom homes to a select number of homes each year you can be sure that home builders for attention to detail it means.



What meets the eye.

It's not just the design and the appearance of the home we build. Our other most important goal is to provide our customers with peace of mind. Right off, every thing you will be designed and executed by a professional, who complete and ready for the specific foundation requirements for the project and each of our homes is designed in every detail from the roof to the foundation.

Our team works together that carries the spirit of the home, with the focus on building for the future. We work to be the most understood through the home owners, so they're not just to our best interests.

Our team works together that carries the spirit of the home, with the focus on building for the future. We work to be the most understood through the home owners, so they're not just to our best interests. Our team works together that carries the spirit of the home, with the focus on building for the future. We work to be the most understood through the home owners, so they're not just to our best interests.

The possibilities are endless.

What are you looking for in your next home? Our extensive experience with diverse clients, from modern, green homes, with classic, elegant or contemporary, traditional, or even, allows us to make each client's home a reality.



At Cason Graye Homes, we understand that every client is different, and every vision is unique.

Cason Graye Homes: Direct Mail
 Designer: Kris Kleis, Kleis Design





CASONGRAYE
DRYWALL
 281.602.6736 or 713.664.7400 | casongrayedrywall.com

QUICK TURNAROUND PROPOSALS
 GREAT PRICING
 UNDERSTANDING INTO WHAT BUILDERS WANT
 TIMELY INSTALLATION AND FINISHING





CASONGRAYE
DRYWALL

Providing excellent turn-key drywall service to builders & general contractors all over the Greater Houston area.

Call today for a great price & quick turnaround on your next construction project.
(It never hurts to get another bid.)

281.602.6736 or 713.664.7400 | casongrayedrywall.com

281.602.6736
 713.664.7400
 281.602.6736 or 713.664.7400 | casongrayedrywall.com

CASON GRAYE DRYWALL, LLC
 1500 W. LINDALE, SUITE 212
 BROWNSVILLE, TX 77750

Cason Graye Homes: Direct Mail
 Designer: Kris Kleis, Kleis Design

DESIGNER'S FURNITURE MFG.
HANDCRAFTED CUSTOM FURNITURE

DFM



713.973.0315 TEL • 713.973.0308 FAX • 5821 WESTVIEW DR • HOUSTON, TEXAS 77055
DFMFURNITURE@AOL.COM • WWW.DESIGNERSFURNITUREMFG.COM

Available exclusively through your designer.



Designer's Furniture MFG: Flyer
Designer: Kris Kleis, Kleis Design

INDIGO

INTERIOR DESIGN



Joe Green ASD
indigointeriordesign.com
713.524.8868

Indigo Interior Design: Ad
Designer: Kris Kleis, Kleis Design



ENTERPRISE
Jet center

If you're only satisfied with the very best, Enterprise Jet Center has got your number.

In fact, we've got all of them:

- 10,000 square foot canopy – the only one at Hobby
- 200,000 square foot clear access ramp engineered to handle 737 aircraft
- 95,000 square foot clear-span hangar
- 25,000 square foot terminal and office building with lounge, fitness center, conference facilities and cafe

For a complete list of our services and amenities, please visit our website: enterprisejetcenter.com
8902 N. Morris Houston, Texas 77065 P: 281.368.6700 fax: 281.368.5700

Rated the #1 FBO at Houston Hobby.

John Williams, Mary Rose Aviation, Inc.

Ever had two aircraft based at Enterprise Jet Center since 2008, Enterprise is a top-notch facility with outstanding personnel that treats you like family on every service and departure. The very comfortable remodeling Enterprise Jet Center to other pilots and aviation departments that are flying into Houston Hobby Airport.

Enterprise Jet Center: Ad
Designer: Kris Kleis, Kleis Design



WongCabello: Capability Brochure

Creative Direction: Ellen Cregan, Cregan Design

Designer: Kris Kleis



St. John's School: Student Recruitment Brochure

Creative Direction: Ellen Cregan, Cregan Design

Designer: Kris Kleis

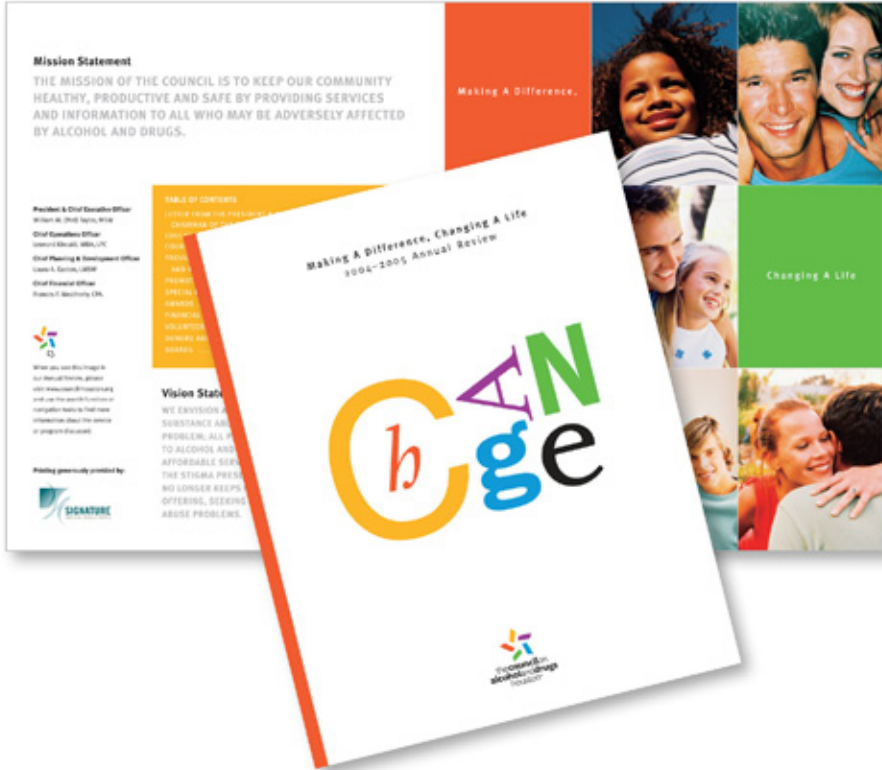
Silver ADDY Award from the American Advertising Federation



The Council on Alcohol & Drugs Houston: Program Brochures

Creative Direction: Ellen Cregan, Cregan Design

Designer: Kris Kleis



The Council on Alcohol & Drugs Houston: Annual Review
 Creative Direction: Ellen Cregan, Cregan Design
 Designer: Kris Kleis

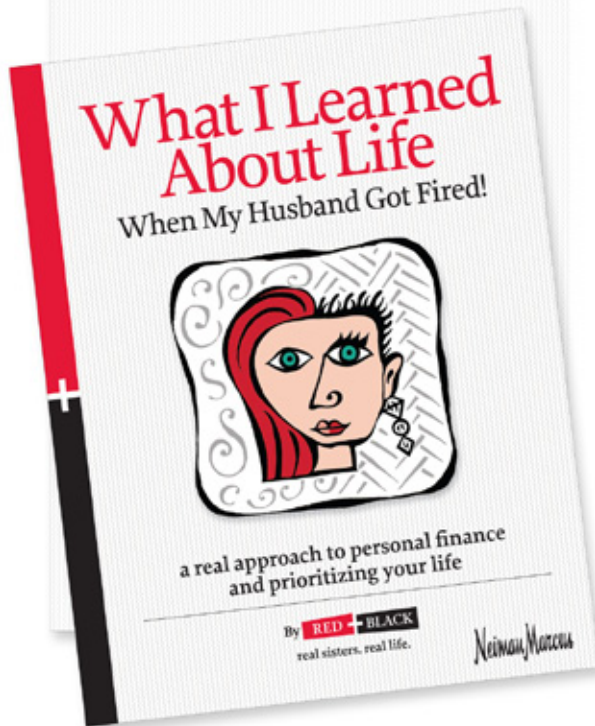


table of contents

prologue	Help – I Have Got A Crisis On My Hands!	1
introduction		5
1	How Did A Smart Person Like Me End Up In A Mess Like This?	11
	You Can Run Away From Home – Not Reality	13
2	Why Can't Money Grow On Trees?	15
	Why Can't I Buy A "Get Rich Quick" Book And Solve All My Problems?	16
	First Steps: Find And Face Financial Facts	17
	Assets And Liabilities – Own Vs. Own	22
	Where Has All Our Money Gone?	27
3	Things I Worry About And The Lessons I Learned All Too Well!	31
	Looking Forward To The Past	32
	You Can't Pick Your Parents, But Can You Blame Them?	34
	Does Mother Always Know Best?	35
	Theoretically We Need More Practical Knowledge	39
	I See My Reflection In My Car	41
	Who Are The "Joneses?" And Why Are We Trying To Keep Up With Them?	44
4	Rearranging The Deck Chairs On The Titanic	49
	Life Gets In The Way Of Plans	49
	It's Not Always About Money	51
	Establishing Financial Priorities	54
	Prioritizing Life	55
	Don't Ignore The Obvious!	57

Red & Black Productions, L.P. | Soft Cover, 348 pages

Creative Direction, Ellen Cregan. Published by Bright Sky Press
Design, Layout & Production: Kris Kleis, Kleis Design

Citation of Excellence from the American Advertising Federation



Kirtsy Takes a Bow. | Hard Cover, 240 pages

Creative Direction, Ellen Cregan. Published by Bright Sky Press

Design: Wyn Bomar Design

Book Layout and Production: Kris Kleis, Kleis Design



Pepper-Lawson Construction: T-Shirt / Logo Design

Designer: Kris Kleis, Kleis Design



Before



After

Lisa & Joe Turano: Poster Design
Designer: Kris Kleis, Kleis Design

k.

[KLEIS DESIGN]

Driven to cultivate relationships with clients by directly impacting their organization's success through quality products and creativity.

KRIS KLEIS

[713.869.6900 tel • kris@kriskleis.com]